



General Info Booklet

Audi FIS Ski World Cup

Garmisch-Partenkirchen

**Men Slalom
26./27.02.2022**

Stand: 09.02.2022

Table of Contents

General Rules	4
Covid-19 Safety Protocoll	4
Basics / General Rules of Conduct.....	4
Journey to Garmisch-Partenkirchen.....	5
Accreditation/Race Office	5
Accreditation Groups	6
Table 1.1	6
Leisure activities during your stay in Garmisch-Partenkirchen	7
Teams and Equipment Partners	8
Team Hotels.....	8
Race office	8
Drive from the accommodation to the event site.....	8
Event site	8
Appendix Chair lift and Finish Area	9
Start	10
Team Hospitality.....	10
Course Crew	10
Media.....	11
On-Site	11
Transportation.....	11
Accreditation & Press Office	11
Press Conferences	12
TV-Cabins.....	12
Photo Zones.....	12
Award Ceremony at the finish area.....	12

Medical care	13
Principle.....	13
Medical Organization Chart.....	13
Description of local hospitals in case of medical treatment	14
Klinikum Garmisch-Partenkirchen.....	14/15
BG Unfallklinik Murnau	14/15
Doctor's Meeting.....	16
Mountain rescue service (Bergwacht)	16
Emergency doctors.....	16
Communications.....	16
Description of first aid protocols.....	17
General principles.....	17
Team doctors.....	17
Outside Competition	17

General Rules

Covid-19 Safety Protocol

Due to the COVID-19 pandemic, the **AUDI FIS Ski World Cup in Garmisch-Partenkirchen on 26th & 27th of February 2022** must be organised and executed with increased security measures.

Useful links:

https://www.rki.de/DE/Content/InfAZ/N/Neuartiges_Coronavirus/nCoV.html

<https://www.corona-katastrophenschutz.bayern.de/faq/index.php>

Basics / General Rules of Conduct

- it is the responsibility of every person to adhere to this policy
- respect hygiene measures
- wash hands and disinfect regularly and thoroughly
- it is obligatory to wear a FFP2-mask in ALL areas (indoors and outdoors)
 - o Except:
 - during mealtimes
 - during the practice of sport
 - athletes in the start and warm-up area
- cover your mouth and nose with your bent elbow when sneezing or coughing
- a minimum distance of 1,5 m applies everywhere
- avoid shaking hands
- avoid personal contacts or limit them to the absolute minimum
 - ⇒ this also applies to the times outside the event area
- avoid contact with people who do not belong to your group
- check your own health situation daily (if you feel ill and suffer from symptoms such as fever, cough, rhinitis, conjunctivitis or other flu symptoms, stay in your room and call the SOS COVID-19 number +49 151 5859 2677)
 - ⇒ in this case, the Covid-19 workflow will be executed

We appeal to EVERYONE to take their OWN RESPONSIBILITY and to comply and implement all measurements and recommendations made! Guidelines are used to implement or control compliance with the COVID-19 specifications. For your own safety and the safety of other people, you must follow the instructions of the operational staff. We reserve the right to exclude you from the event and to take legal action in the event of noncompliance with the COVID-19 regulations. The measurements defined were determined in accordance with the current regulations from 9.2.2022. The organizer reserves the right to make necessary changes, which will be announced immediately.

Travel restrictions and journey to Garmisch-Partenkirchen

- in case of COVID-19 symptoms do not travel to the venue
- avoid stops between your departure point and the event location
- avoid contact with other people - especially outside the team
- from the 23rd of December 2021 onwards, every person older than 6 years there is an obligation to carry a Covid certificate, either a negative PCR-test (not older than 48 hours) or a recovering certificate of Covid-19 or a vaccination certificate

Das gilt bei Einreise nach Deutschland

		Digitale Einreiseanmeldung	Negativer Test	Quarantäne
Kein Risikogebiet	Geimpft/Genesen	nein	nein	nein
	Ungeimpft	nein	ja	nein
	Kinder unter 6	nein	nein	nein
Hochrisikogebiet	Geimpft/Genesen	ja	nein	nein
	Ungeimpft	ja	ja	10 Tage*
	Kinder unter 6	ja	nein	5 Tage
Virus-varianten-gebiet	Geimpft/Genesen	ja	ja	14 Tage
	Ungeimpft	ja	ja	14 Tage
	Kinder unter 6	ja	nein	14 Tage

*Verkürzung nach 5 Tagen möglich.

Accreditation (Kongresshaus Garmisch-Partenkirchen)

<https://goo.gl/maps/C1Hwx72a1bbsY5S56>

- due to the current situation, we as organizers have to limit the number of accredited persons; please only accredit people who are really necessary during the World Cup races
- each team member officially named by the respective National Ski Federation via the FIS online system **must submit a negative PCR entry test not older than 48 hours**
- it is mandatory to fill out the **Daily Health Questionnaire** which is also included in the FIS Covid-19 Passport
- the COVID-19 test protocol of each individual team member must be submitted via the FIS COVID-19 Passport no later than 6 hours before the accreditation is picked up
- only after the above mentioned documents have been recorded in the FIS Covid-19 passport, the accreditations will be handed out to the team captain or one nominated person

Accreditation Groups

The security plan provides that only the following persons should be granted access to the event. All attending persons are divided into groups (COLORS) and will be registered.

Table 1.1

Accreditation Group	Tests Required	Accreditation/Registration
RED BUBBLE Athletes, coaches, support, service, SRS, FIS, Timing & Data	PCR entry test on FIS PASSPORT	Kongresshaus Garmisch-Partenkirchen
BLUE BUBBLE Media, HB and OK employees: - media and HB - OK: closest management, start/finish/team hospitality/racing office, shuttle driver - Volunteers: Production along the racing track - External companies	Media: PCR entry test on FIS PASSPORT OK employees/ closest management: PCR entry test External companies: PCR entry test	Kongresshaus Garmisch-Partenkirchen Volunteers: registration west side Ski-Stadium (OSP)
GREEN BUBBLE Visitors /VIPs	2G plus	

According to the table above, the RED and parts of the BLUE Group must upload a PCR test not older than 48 hours to the FIS PASSPORT page before arrival.

ATTENTION: Persons with a positive PCR test within 2 weeks prior to arrival cannot participate in the event.

COVID-19 Communication

- In case of symptoms during 26th and 27th of February please call the LOC number immediately (+49 151 5859 2677)
 - o LOC activates the COVID-19 rescue chain
 - o all communication regarding COVID-19 must be coordinated with the FIS, the LOC and the local health authority Garmisch-Partenkirchen.

Leisure activities during your stay in Garmisch-Partenkirchen

- during all recreational activities, remember to comply with the COVID-19 measurements such as social distancing, wearing FFP2-masks, hygiene and contact avoidance
- restrict your leisure activities to necessary shopping as well as urgent tasks only
- spend your free time only with members of your team/small group
- To keep the risk of infection as low as possible, the LOC recommends:
 - o Stay only in small groups
 - o Avoid contact with other teams, tourists or fans
 - o Restrict contact with other people
 - o Keep your distance, wash your hands frequently and disinfect them as often as possible

Teams and Equipment Partners

Team Hotels

- the LOC has reserved all team accommodations
- each team member is obliged to stay in the accommodation allocated by the LOC for the duration of the event
- wear a FFP2-mask in all public areas
- if possible, there will be no melas in buffet style and separate eating rooms for the red bubble
- further hygiene measures according to the hotels policy
- check-in of all team members only by the team captain
- maintain social distancing in all areas
- avoid using elevators

Race office, Accreditation and TCM

- the **race office** for the RED bubble is located at the **Ski-Stadium, Karl-und-Martin-Neuner-Platz, 82467 Garmisch-Partenkirchen (east entrance)**
<https://goo.gl/maps/B3ij6PMwBJvcbmD78>
- the **accreditation** is located at **Kongresshaus Garmisch-Partenkirchen, Richard-Strauss Platz 1, 82467 Garmisch-Partenkirchen (back entrance)**
<https://goo.gl/maps/5MUvq5MAqY9Fnz3r5>
- The **Team Captains' Meeting** will be streamed out of the Ski-Stadium
 - o Team Captains' Meeting:
 - only the podium needs to be present with mandatory FFP2-masks
 - it will be streamed

Drive from the accommodation to the event site

- transport only in your own teams' vehicles
- avoid stops between the hotel and the venue
- use the allocated and designated parking space for your teams only (red parking space/ATS)
-

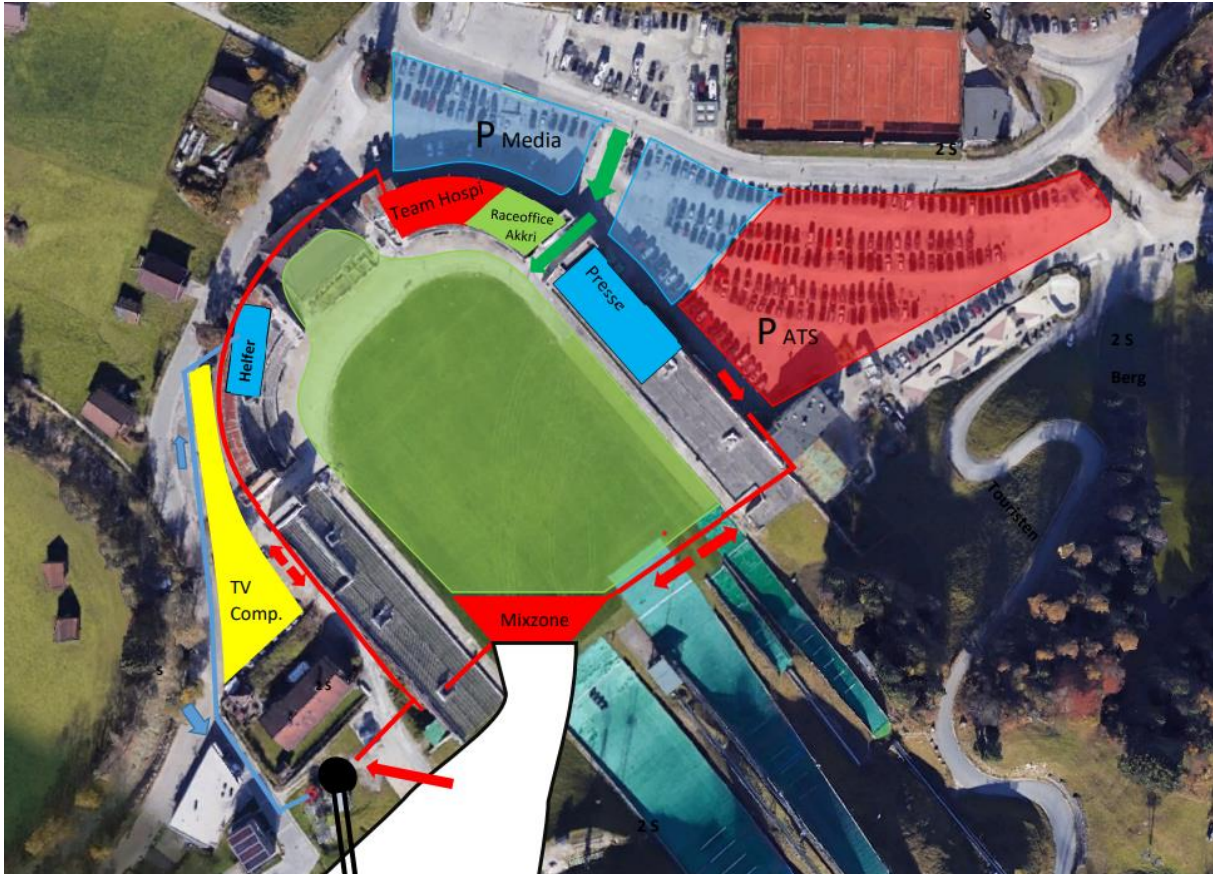
Event site

- maintain social distancing
- remain in the assigned and marked team zones (red zone)
- the team zone (red zone) is cordoned off and will be accessible to designated accredited people only
- avoid direct contact with other teams, employees or press
- FFP2-masks must be worn on the event site, except:
 - o during the practice of sport
 - o during mealtimes

Chair lift Gudiberg

- separate entrance line for athletes / coaches (group RED)
- mandatory FFP2-masks in the chair lift
- RED and BLUE Group must not use the same chair
- follow red walking/skiing routes from the finish area and after inspection to the chair lift

Finish area Gudiberg



Start

- the start area is reserved for athletes, team members and start personnel only; it is fenced in and cannot be entered by staff or guests
- start tent: max. 1 athlete + 2 team members with FFP2-masks
- 1 Start Judge, 1 Swiss Timing Starter, 1 Hand Timing, 1 Access Controller (all with mandatory FFP2-masks)
- in the warm-up tent (not closed) a distance of 1,5 meter must be kept
- the starting numbers will be handed out by only 1 person
- please respect FFP2-mask obligation and distancing

Team Hospitality

- it is located at the east entrance of the Ski-Stadium
- obligation to wear a FFP2- mask in the team hospitality area
- the entrance is limited to athletes and coaches
- prepared food and drinks are available in the team hospitality area
- indoor toilets are of course available
- keep your distance all the time
- please sit together with your team colleagues only
- continuous disinfection of tables / chairs is obvious

Course Crew

- the course crew will register in the morning at the west side (OSP)
- they are divided into small groups and must not mix, i.e. they must avoid any contact with other groups
- obligation to wear a FFP2-mask and keep your distance

Media

On-Site

- a FFP2-mask must be worn in all accredited areas, whether indoors or outdoors
- keep your distance of 1,5 meter
- media representatives are required to restrict their movements as far as possible and not to leave the BLUE zone
- media has no access to the competition areas or the team areas and no direct contact to the athletes
- in the Mixed Zone a minimum of 1,5 meters has to be kept
- during the event, all interviews must be conducted in the Mixed Zone
- all microphones should be covered with a disposable plastic foil, which is replaced after each interview
- the microphone is reserved exclusively for the athlete, journalists should not speak into the same microphone

Transportation

- media representatives should use their own vehicles
- there are parking spaces next to the event area (BLUE)

Accreditation & Media Center

- all journalists must register on the FIS PASSPORT page and upload a valid **negative PCR entry test, not older than 48 hours** before arrival
- they have to answer the Daily Health Questionnaire at the FIS Passport
 - o only if the negative PCR test result is uploaded and the Daily Health Questionnaire is filled in, the accreditations are handed out at the **Kongresshaus Garmisch-Partenkirchen**, Richard-Strauss Platz 1, 82467 Garmisch-Partenkirchen (back entrance) <https://goo.gl/maps/5MUvq5MAqY9Fnz3r5>
 - o Homepage: <https://fispassport.fis-ski.com/fis>
- each journalist is assigned a **workstation at the Media Center in the east part of the Olympic-Skistadium**, that remains the same throughout the entire race week
- the workplaces are disinfected daily
- toilets are cleaned and disinfected regularly
- obligation to wear FFP2-masks which can be removed at the workstation
- keep a minimum distance of 1,5 m - tables are set up considering the minimum distancing rules
- food will be served

It is the responsibility of every person to adhere to this policy!!!

Press Conferences

- there won't be any press conferences

TV-Cabins

- each member of this group must also submit a **negative PCR entry-test not older than 48 hours** via the FIS online PASSPORT system
- max. 2 persons per cabin
- please follow the signage
- obligation to wear FFP2-masks

Photo Zones

- a FFP2-mask must be worn during the whole time
- please observe the distancing rules, also outdoors
- photographers are not allowed to enter the finish area to take pictures of the award ceremony
 - o therefore, the podium will be rotated so that pictures can be taken directly from the photographers' stand in the finish area

Award Ceremony at the finish area

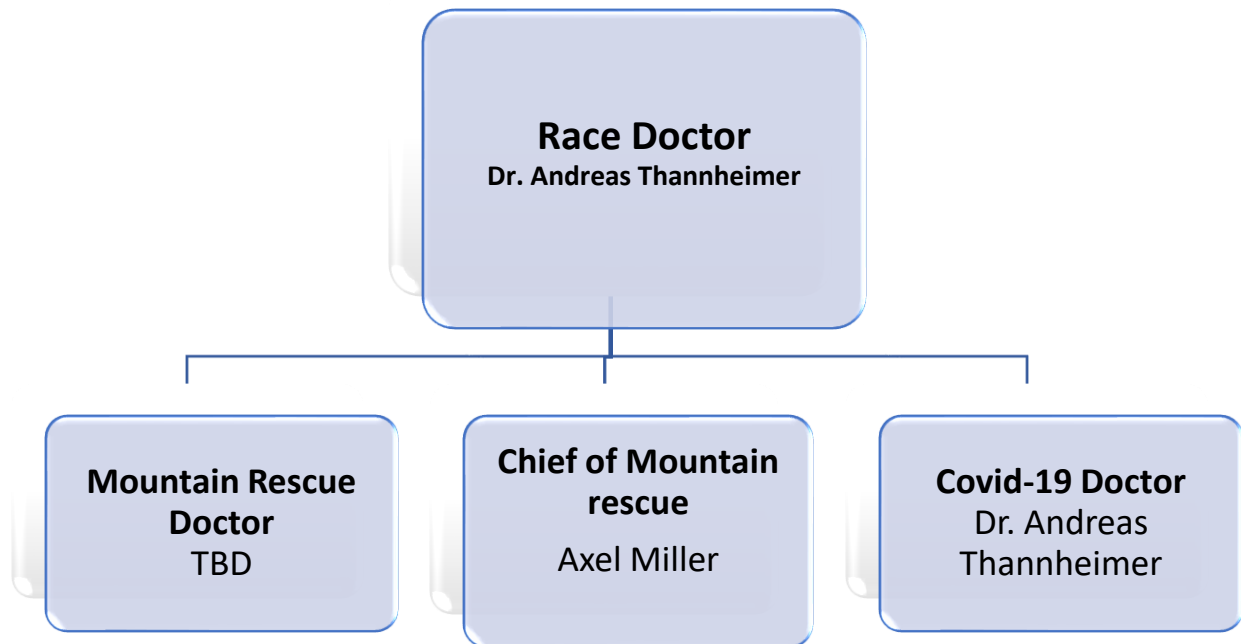
- the official award ceremony will be held immediately after the race and only the podium (1st, 2nd, 3rd) will be awarded
- athletes enter from the fenced areas
- the trophies are on the podium
- the athletes will leave the award ceremony following the RED way out of the Mixed Zone
- FFP2-masks must be worn during the entire ceremony
- avoid shaking hands and keep your distance
- follow the signage and stay in your assigned zones only
- observe the general safety and hygiene measures

Medical care

Principle

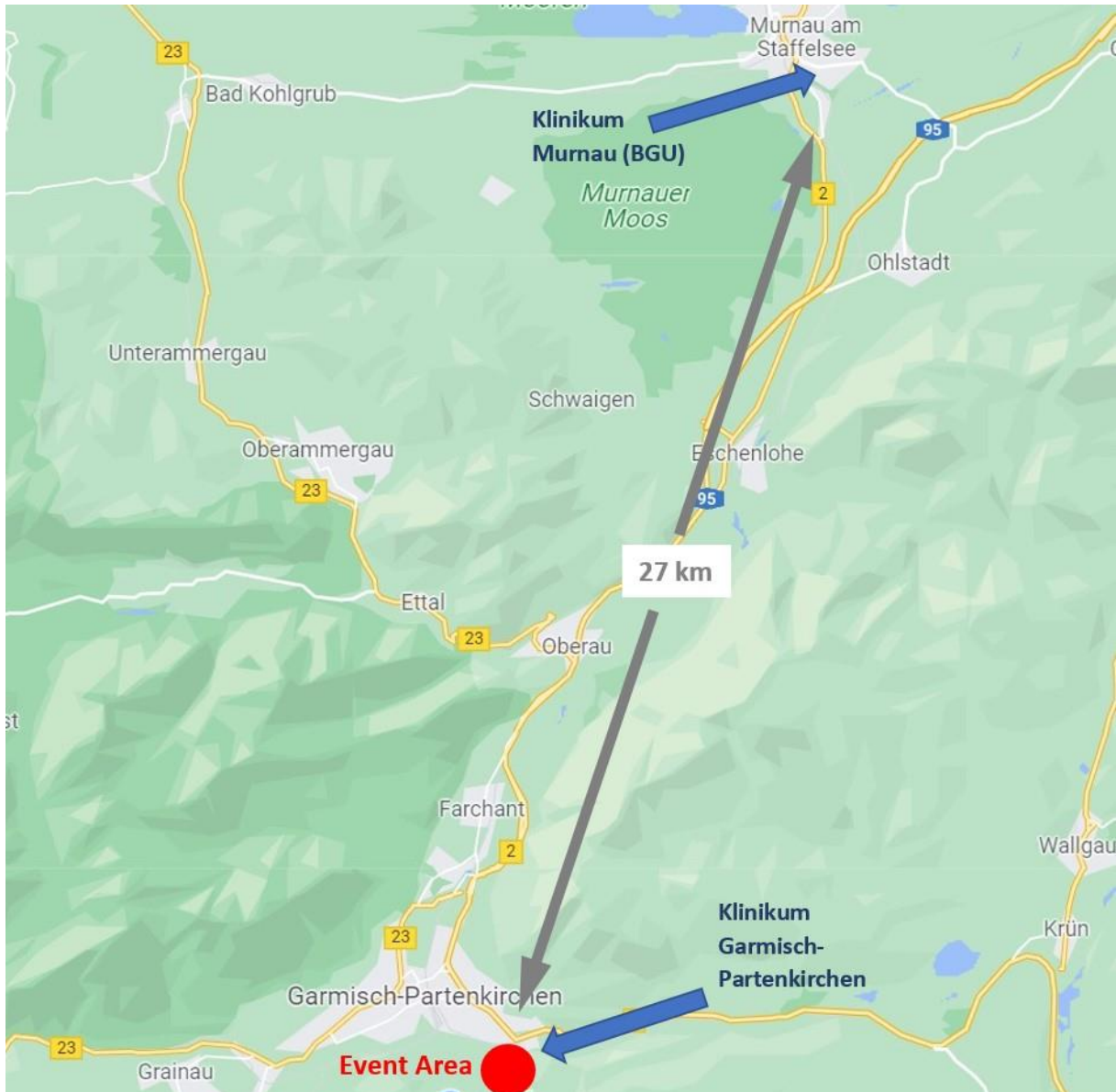
It is the responsibility of the medical department of the LOC to make sure that all participants of the World Cup Races should have every medical support needed. Primarily this applies to the athletes on and off the slope, as well as to everyone else involved during the races.

Medical Organization Chart



Description of local hospitals in case of medical treatment

Klinikum Garmisch-Partenkirchen and Klinikum Murnau





Further details Klinikum Garmisch-Partenkirchen:

- Auenstraße 6, 82467 Garmisch-Partenkirchen
- Tel. 0049-8821-770
- Flight Time 2 min from racetrack
- Driving Time 10 min from racetrack
- 500 beds with 20 intensive care beds
- Level 2 Traumacenter- MRI 12/7 - general surgery- vascular surgery- thorax surgery- endoscopy 24/7-heart catheter 24/7- CT24/7-, blood bank.

Further details Klinikum Murnau:

- Professor-Küntschers-Straße 8, 82418 Murnau am Staffelsee
- Tel 0049-8841-480
- Flight time 10 min from racetrack
- Driving Time 30 min from racetrack
- 1000 beds with 40 intensive care beds
- Level1 Traumacenter-CT24/7- neurosurgery – burning unit - endoscopy 24/7 -heart catheter 24/7, blood bank.

Doctor's Meeting

The doctors meeting will be held outside, next to the chair lift.

Mountain rescue service (Bergwacht)

We are providing up to 25 persons of the mountain rescue staff. Members of this workforce are the first attendees during the races. They are all qualified, experienced professionals who have undergone annual refreshing courses. During the races, the staff has the following equipment at their disposal:

- resuscitation equipment: oxygen, semi-automatic defibrillator (SAD)
- immobilization equipment: limb splints, cervical collars, vacuum mattresses
- transport equipment: sledges, vacuum-mattresses, and skidoos
- communication equipment: radio telecommunication system, mobile phones
- The Chief of Mountain rescue is located in the finish area and has access to the uncut TV Source and is directly linked with the Jury and the race doctor

Emergency doctors

We are providing 4 emergency doctors. They are all qualified and experienced mountain emergency doctors. A lead doctor will be designated to ensure medical coordination.

The number and distribution of doctors on the track and around the site are shown on the map above. The emergency doctors will be present during the competitions as well as during the official training sessions.

Communications

The entire medical team is equipped with a radio telecommunication system with a special frequency. Additional communication will be done by mobile phones.

The race doctor, Dr. Andreas Thannheimer, is in close contact with the emergency doctors, the rescue staff, the jury and the hospitals.

Description of first aid protocols

General principles

In the context of injuries occurring during warm up, official training sessions and competitions:

- The chief of race ensures that the track is clear and gives the go-ahead for the rescue staff to intervene

----- Start Stop -----

- The rescue staff is the first to intervene, making an initial assessment and transmitting it to the chief of mountain rescue, who is in contact with the Race doctor and the jury. The rescue staff will carry out first aid. The chief of mountain rescue decides whether a doctor should intervene on the track or not.
- If a doctors intervention is necessary, the emergency doctor oversees the therapeutic management and transmits a second report. The emergency doctor will escort the patient until secondary transfer.
- The Race doctor, Dr. Andreas Thannheimer will choose - in collaboration with the chief of mountain rescue - the most appropriate way of evacuation and destination for the patient
- Most likely this is going to be the Klinikum Garmisch-Partenkirchen (only 2 minutes by car)
- During race days there is one experienced trauma surgeon exclusively booked for the athletes and staff of the Kandahar races at the Klinikum Garmisch-Partenkirchen.

Team doctors

- They may approach to their injured racers after the track has been closed and the attending rescue staff has given permission.
- They may intervene but only if asked by and under the responsibility of the organizing medical staff present.
- If any injury occurs after the race, training or warm-up, the teams have to inform Dr. Andreas Thannheimer, to complete the injury form for FIS ISS.

Outside Competition

For **any** medical problem or question occurring outside the competition, warm-up or training track, please do not hesitate to contact the race doctor Dr. Andreas Thannheimer any time, unless it is an emergency situation.

For any emergency situation outside the competition, warm up or training, please contact

112 immediately to get connected to the local Medical Rescue System (Rotes Kreuz).

