

## Falun (Sweden) – 13-14/02/2016

### Competition Program

Date	Format	Distance	Remarks
13/02/2016	Individual	5km /10km	
14/02/2016	Mass start	10km / 15km	

### Event Program

Date	Competition*	TCM *	Other
<b>Thursday</b> 11/02/2016			<b>Arrivals from Stockholm</b>
<b>Friday</b> 12/02/2016	<b>HB Test-race</b> 14 :00 – 15 :00	<b>16 :30</b> Högskolan (close to Scandic)	<b>18 :00</b> Opening Ceremony City Center 18 :30 Company relay
<b>Saturday</b> 13/02/2016	<b>11 :30</b> 5km C Ladies <b>13 :15</b> 10m C Men	<b>17 :30</b> Högskolan	
<b>Sunday</b> 14/02/2016	<b>11 :30</b> 10km F Ladies <b>14 :30</b> 15km F Men		10 :00 Youth competition

\*Subject to change (check latest version on [www.fis-ski.com](http://www.fis-ski.com))

### Deadlines

Preliminary entries	Final numbers	Wax Trucks	Final entries
02/01/2016	03/02/2016	03/10/2016	12/02 at 14:30

### Contacts

[www.skidspelen.se](http://www.skidspelen.se), facebook/Skidspelen

Office	Name	Telephone	Email
Head Quarters	Anki Kjellberg	+46 70 6387623	<a href="mailto:anki@skidspelen.se">anki@skidspelen.se</a>
Accommodation office	Anki Anita/Scandic		wcfalun@skidspelen.se
Transportation office	Mats Eriksson		wcfalun@skidspelen.se
Race office	Peo Lidén		<a href="mailto:wcfalun@skidspelen.se">wcfalun@skidspelen.se</a>
Financial office/ Tax paper responsible	Kristina Helders	+46 (0)107086908	wcfalun@skidspelen.se
Wax Cabins	Jan Kvist		wcfalun@skidspelen.se
Cheif of competition	Tomas Jons	+462382017	Tomas.jons@falun.se

## 1. Accreditation

- The FIS season accreditation and FIS season parking cards will be valid. Requests for additional accreditation and parking cards must be send via the FIS Online System.
- Requested additional accreditation and parking cards can be picked up at : Attaché office, Scandic Hotel, opening time daily from 08 :00 to 22 :00 Thursday-Sunday

## 2. Race Office

- Race office in Stora Enso stadium building opening time :
  - Friday Feb 12th from 09 :00 to 16 :00
  - Saturday and Sunday 08 :00 to 16 :00

## 3. Accommodation (World Cup Rules Art. 13)

- Booking according the FIS Rules via FIS Online registration system
- The OC offers following accommodation in different categories/prices (all full board):
  - Three star hotel Scandic , First Hotel Grand : 125 CHF
  - **Lugnet Village cottage ,Two star : tbc**
  - **Främby Udde cottage , Tree star by the lake : tbc**
- Price for additional accommodation outside of the quota : 125 CHF (Borlänge)
- Price for additional single rooms outside of the quota : 160 CHF

## 4. Transport (World Cup Rules Art. 11)

- Official airport : Stockholm Arlanda
- The organizing committee will arrange transportation between the airports and the hotels. 1 transport (from and to the airport) free of charge. Price for additional transport :
  - 70€ for Arlanda airport / trip
  - 150€ for Västerås airport / trip
- Information to the Shuttle service
  - Scandic Hotels : no shuttle service (walking distance)
  - First Hotel Grand : Minibus shuttle service

## 5. Payment (World Cup Rules Art. 10 and 13)

- Accommodation costs : Teams will pay directly in their hotels (persons from the red list will be paid by the OC directly)
- Carrying costs/Reimbursement :
  - All payment will be done by bank transfer.
  - Time for checking and updating the bank transfer on Friday 12/02/2016 at the Stora Enso / competition building. Time TBD

## 6. Waxing facilities (World Cup Rules Art. 14)

- Wax cabins : available from 06/02/2016 at 8 :00
- Waxing trucks : teams arriving with trucks have to inform the OC before 15/01/2016 with exact measurements of the truck and details of the needs

## 7. Regulations of radio equipment:

- The import, export and the operation of radio equipment in Sweden is regulated by national law. Permits for the use of radio transmission equipment must be requested according to national
- Information: [www.radioinsweden.com](http://www.radioinsweden.com)

## **8. Regulations of Visa:**

- Remember that citizens of some countries will need visa for visiting Sweden. Please check with your embassy if you need a visa for Sweden.
- For an official letter of invitation, please send a request to [wcfalun@falun2015.com](mailto:wcfalun@falun2015.com)

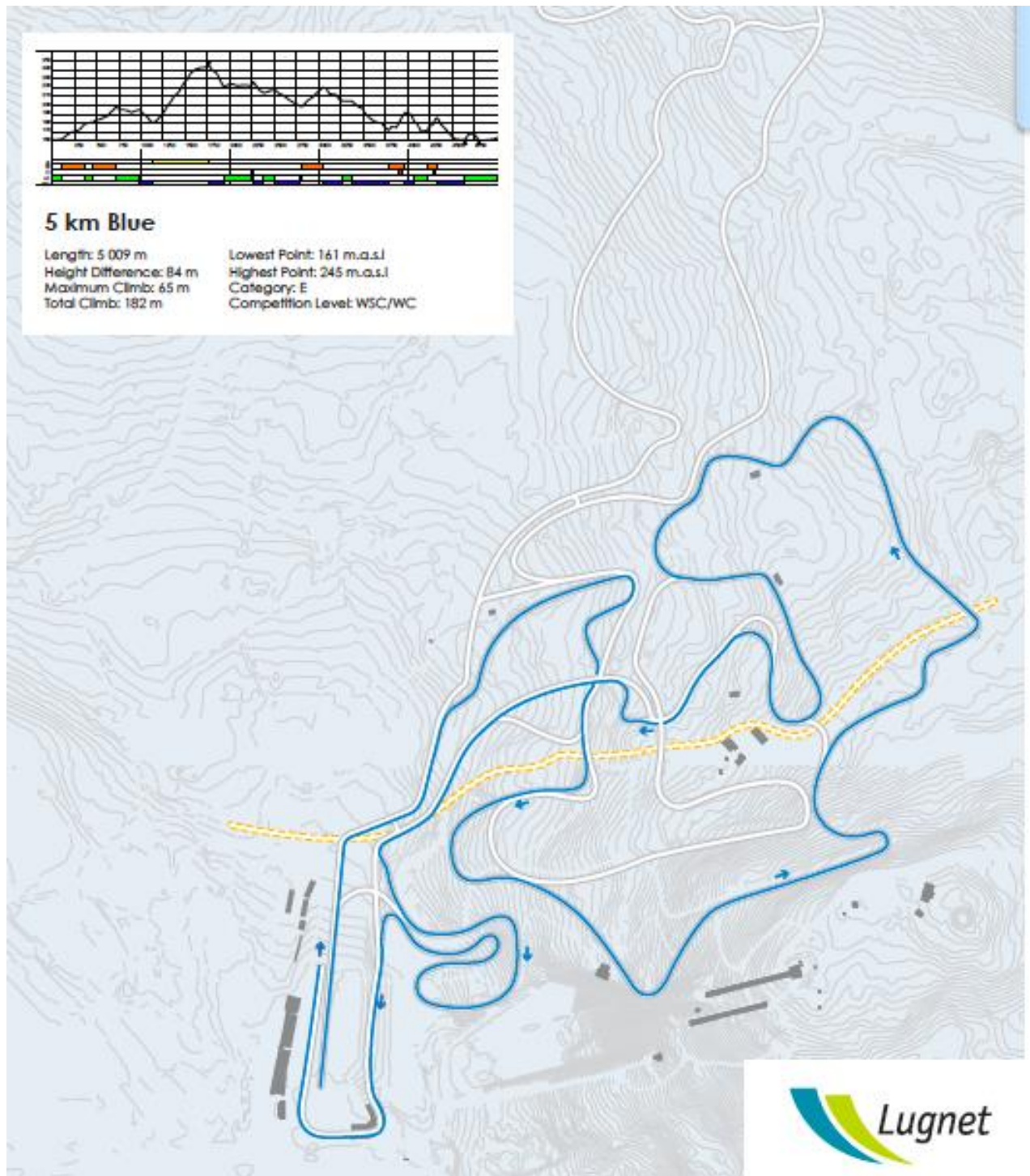
## **9. Special permissions for truck driving (Sunday- and night, other days with special regulations)**

## **10. Income tax information for prize money:**

(according to Swedish law of 2015)

- Each athlete who receives prize money for the first time in Sweden have to present a copy of his/her Passport
- Each athlete is responsible for informing FIS ([spitz@fiski.ch](mailto:spitz@fiski.ch)) of his/her bank and personal details. FIS's database will be used for the payment of prize money.
- Income tax for a citizen in an EU/EFTA country is 15 %.
- Income tax and social contribution for a citizen in another country than EU/EFTA is
  - 35,32 % if the prize winner is born 1990 or earlier
  - 32,25 % if the prize winner is born 1991 or later
- Citizens from Switzerland, Canada and USA can reduce the tax burden to 15 % if the athletes provide a certificate that confirm that the athletes pay social contributions in their home country. Please contact your home country's tax association for the certificate

## 11. Maps and Courses



12. Route book

Falun to Lahti

